



AIR TRANSPORT TREND BULLETIN



Airlines, Airports and Airliners 2019 full year results

In this quarterly publication (next in July) you will find facts and figures about the civil aviation industry, based on data extracted from our air transport databases.

This quarter you will find :

- Main airlines traffic statistics in 2019 with 2019/18 comparison by quarter
- Busiest airports by passenger traffic in 2019 for every region of the world with 2019/18 comparison
- Airline industry orders and deliveries in 2019 with 2019/18 evolution by quarter and aircraft models

We wish you a pleasant reading!

Every question or suggestion related to this publication or our services are welcome at :

atd@fracs.aero

If you have missed the last report please click on the following link :

[Q3 2019 first results and main US traffic flows](#)

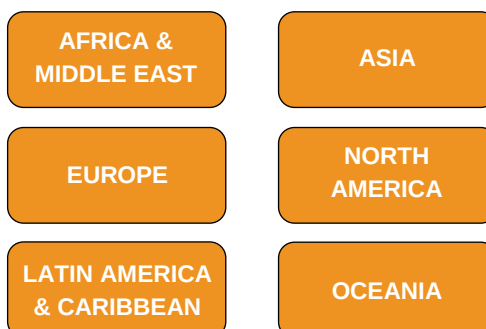
Summary

1 - Main Airlines' traffic 2019

2 - Main Airport's traffic 2019

Main Airport's traffic 2019 - Top 15

Main airports' traffic 2019 by regions



3 - Airliners Orders and Deliveries 2019

4 - Our Databases and Services





AIR TRANSPORT TREND BULLETIN

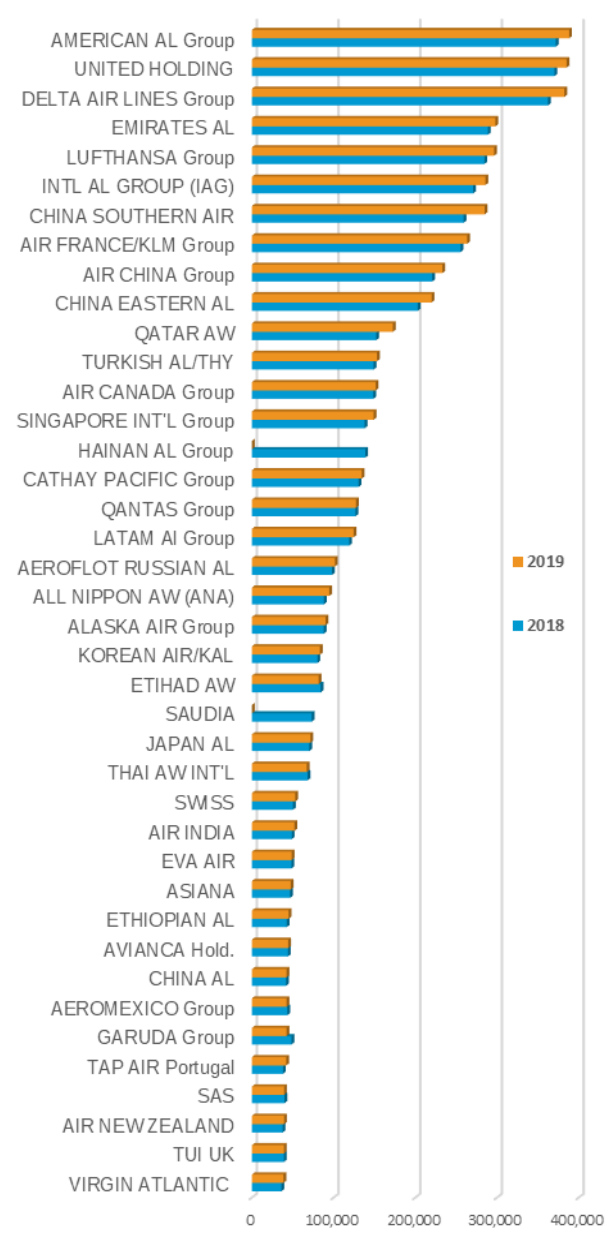


Main Airlines' traffic 2019

Qatar Airways had a very strong growth in 2019 (+13.4%), getting closer than ever to the top 10 busiest airlines (in RPK). Southwest Airlines, the busiest low-cost airline (in PAX) recorded a slowdown (-0.6%) last year, and was near to be caught by Ryanair (+9.6%). While the biggest increase was still for the Indian low-cost carrier IndiGo (+20.9%).

AIRLINES	RPK ¹ (millions) 2019	19/18 (%)	Q1 19/18 (%)	Q2 19/18 (%)	Q3 19/18 (%)	Q4 19/18 (%)
AMERICAN AL Group	388,254	4.4	3.5	3.1	4.9	6.0
UNITED HOLDING	385,211	4.0	6.5	5.1	2.0	2.9
DELTA AIR LINES Group	382,400	5.5	4.8	6.3	5.6	9.8
EMIRATES AL	298,000	3.1	1.4	0.9	6.2	3.7
LUFTHANSA Group	296,500	4.2	6.4	13.9	2.9	-6.5
INTL AL GROUP (IAG)	285,800	5.6	6.4	6.6	2.1	7.9
CHINA SOUTHERN AIR	284,900	10.0	12.1	8.9	11.1	7.8
AIR FRANCE/KLM Group	263,500	3.2	1.9	5.7	1.8	3.4
AIR CHINA Group	233,178	5.6	7.4	5.8	5.6	3.9
CHINA EASTERN AL	220,000	8.4	8.9	9.5	8.0	10.4
** QATAR AW	172,600	13.4	10.9	21.1	-	-
TURKISH AL/THY	153,200	2.7	1.7	0.2	0.0	9.7
AIR CANADA Group	151,460	1.9	4.2	3.6	-1.8	2.9
SINGAPORE INT'L Group	149,100	8.0	8.5	8.0	7.2	8.3
* HAINAN AL Group	138,700	-	10.9	9.8	-	-
CATHAY PACIFIC Group	134,400	2.9	5.3	8.1	1.0	-2.5
QANTAS Group	127,500	0.6	-1.0	19.2	-	-
LATAM AI Group	124,500	4.5	5.2	5.4	3.3	4.5
AEROFLOT RUSSIAN AL	101,600	3.7	11.0	6.6	0.7	-2.6
ALL NIPPON AW (ANA)	94,659	7.3	-1.1	7.6	4.8	11.0
ALASKA AIR Group	90,200	2.5	0.4	1.1	4.4	3.9
** KOREAN AIR/KAL	83,300	3.9	1.8	4.1	3.2	6.2
** ETIHAD AW	81,700	-3.1	-	-	-	-
* SAUDIA	73,200	-	-	-	-	-
JAPAN AL	71,614	1.9	3.3	2.9	1.5	-0.1
THAI AW INT'L	67,200	-1.5	-4.2	-6.5	-1.0	5.9
SWISS	53,100	5.6	9.5	6.2	4.3	3.4
AIR INDIA	52,100	6.8	4.2	7.4	8.8	8.3
EVA AIR	48,700	0.6	1.7	-3.2	-2.7	6.8
** ASIANA	47,500	1.5	-2.2	0.7	-1.1	-
** ETHIOPIAN AL	45,000	5.6	9.7	8.0	1.1	-
AVIANCA Hold.	44,400	0.7	6.5	4.1	1.3	-5.6
CHINA AL	42,500	1.7	-4.9	4.4	3.9	4.1
AEROMEXICO Group	42,470	-2.1	-0.4	0.1	-3.2	-5.2
GARUDA Group	42,400	-12.6	-	-	-	-
TAP AIR Portugal	42,000	10.5	-2.7	10.5	-	-
SAS	39,400	-1.3	-4.7	-12.0	-7.3	0.9
AIR NEW ZEALAND	39,400	4.8	5.5	4.7	3.3	4.8
TUI UK	39,200	0.0	-0.4	-0.3	4.1	-5.9
VIRGIN ATLANTIC	38,700	6.9	18.6	5.0	2.0	5.5

Main Airlines RPK - 2019/18



AIRLINES (low-cost)	PAX ² (thousands) 2019	19/18 (%)	Q1 19/18 (%)	Q2 19/18 (%)	Q3 19/18 (%)	Q4 19/18 (%)
SOUTHWEST AL	162,700	-0.6	0.7	-1.0	-0.8	-1.3
RYANAIR	152,400	9.6	10.4	11.8	9.5	6.5
EASYJET AL	96,679	9.4	11.4	8.2	7.7	2.8
INDIGO AL	74,700	20.9	25.1	29.8	20.0	26.2
JETBLUE AW	42,700	1.2	2.9	0.9	-0.8	2.7

¹ Revenue Passenger-Kilometers

² Revenue Passengers carried

* 2018 data
** Estimated data

Sources : FRACS Air transport data



AIR TRANSPORT TREND BULLETIN



Main Airport's traffic 2019

In 2019 airports traffic was still growing (+2.9%), but more slowly than in 2018 (+5.8%).

All regions in the world recorded growths between +3.3% and +3.9%, close to the global average of +2.9%. Except for Oceania (-8.2%), mainly because of the bad performance of Indonesian airports last year.

Freight traffic volume has decreased for 2019 (-2.7%), for the first time since 2012. Less than -3% were recorded in all regions except North America (-0.6%).

REGIONS	PAX 19/18 * (%)
AFRICA & MIDDLE EAST	3.4%
ASIA	3.6%
EUROPE	3.3%
LATIN AMERICA & CARIBBEAN	3.9%
NORTH AMERICA	3.4%
OCEANIA	-8.2%
WORLD	2.9%

* Preliminary results based on 1200 airports

In the next pages you will find the world's top 15 airports ranked by number of aircraft movements, passengers traffic and freight traffic. (with growing % compared to 2018 results)

Followed by the top 50 airports of each region of the world by number of passengers (movements and freight data also included when available)

Countries included in this survey classified by region

AFRICA & MIDDLE EAST		EUROPE		LATIN AMERICA & CARIBBEAN		ASIA
BAHRAIN	LESOTHO	ARMENIA	LITHUANIA	ARUBA	HONDURAS	CAMBODIA
BENIN	MADAGASCAR	AUSTRIA	LUXEMBOURG	BAHAMAS	JAMAICA	CHINA
BOTSWANA	MALAWI	AZERBAIJAN	MACEDONIA	BARBADOS	MARTINIQUE	HONG KONG
BURKINA FASO	MALI	BELARUS	MALTA	BELIZE	MEXICO	INDIA
BURUNDI	MAURITIUS	BELGIUM	MOLDOVA	BERMUDA	NETHERLANDS ANTILLES	JAPAN
CAMEROON	MOROCCO	BOSNIA HERZEGOVINA	MONACO	BRAZIL	NICARAGUA	KOREA (REP)
CAPE VERDE	MOZAMBIQUE	BULGARIA	MONTENEGRO	CHILE	PANAMA	MACAO
CENTRAL AFRICAN REPUBLIC	NAMIBIA	CROATIA	NETHERLANDS	COLOMBIA	PARAGUAY	MALAYSIA
CONGO	NIGERIA	CYPRUS	NORWAY	COSTA RICA	PERU	MALDIVES
CONGO (DEM REP)	OMAN	CZECH REPUBLIC	POLAND	CUBA	PUERTO RICO	MONGOLIA
EGYPT	QATAR	DENMARK	PORTUGAL	DOMINICAN REPUBLIC	SAINT LUCIA	MYANMAR
EQUATORIAL GUINEA	RWANDA	ESTONIA	ROMANIA	ECUADOR	SURINAME	NEPAL
ERITREA	SAO TOME AND PRINCIPE	FINLAND	RUSSIA	EL SALVADOR	TRINIDAD AND TOBAGO	PAKISTAN
ETHIOPIA	SAUDI ARABIA	FRANCE	RUSSIA	FRENCH GUIANA	URUGUAY	PHILIPPINES
GABON	SENEGAL	GEORGIA	SERBIA	GADELOUPE	VENEZUELA	SINGAPORE
GAMBIA	SEYCHELLES	GERMANY	SLOVAKIA			SRI LANKA
GHANA	SIERRA LEONE	GIBRALTAR	SLOVENIA			TAIWAN
GUINEA	SOUTH AFRICA	GREECE	SPAIN	OCEANIA	NORTH AMERICA	THAILAND
GUINEA-BISSAU	SUDAN	HUNGARY	SWEDEN	AUSTRALIA	CANADA	VIETNAM
IRAN	SWAZILAND	ICELAND	SWITZERLAND	COCOS (KEELING) ISL	UNITED STATES	
IRAQ	TANZANIA	IRELAND	TURKEY	COOK ISL		
ISRAEL	TOGO	ITALY	UKRAINE	FIJI		
IVORY COAST	TUNISIA	KAZAKHSTAN	UNITED KINGDOM	INDONESIA		
JORDAN	UGANDA	KOSOVO	UZBEKISTAN	NEW ZEALAND		
KENYA	UNITED ARAB EMIRATES			SAMOA		
KUWAIT	ZAMBIA			TONGA		
	ZIMBABWE					

Sources : FRACS Air transport data, ACI

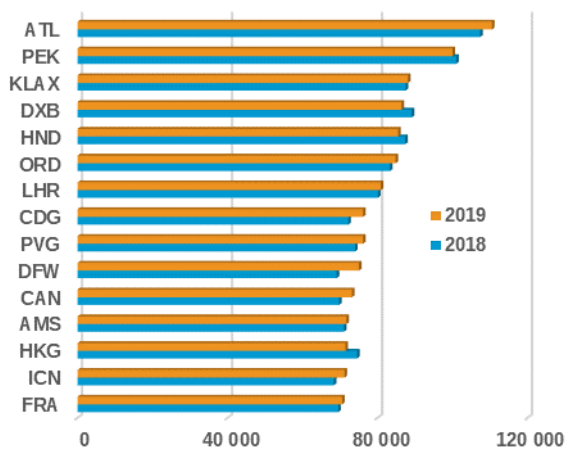


AIR TRANSPORT TREND BULLETIN

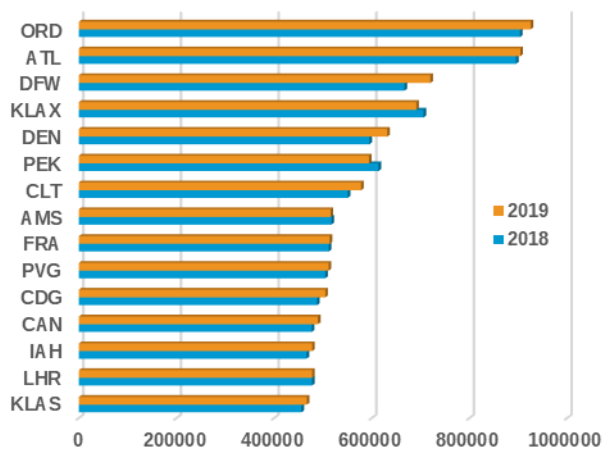


Main Airport's traffic 2019 - Top 15

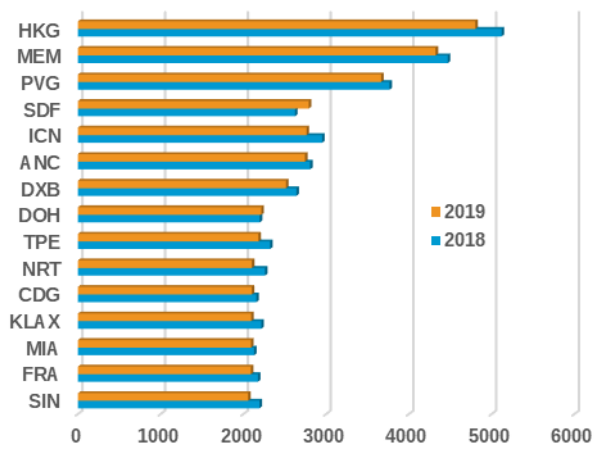
Airports	Passengers 2019 ('000)	19/18 (%)	Q1 19/18 (%)	Q2 19/18 (%)	Q3 19/18 (%)	Q4 19/18 (%)
ATLANTA	110,531	2.9	3.2	3.4	3.2	1.9
BEIJING - CAPITAL	100,011	-1.0	1.6	-2.8	0.3	-2.9
LOS ANGELES - INTL	88,107	0.7	1.2	0.7	0.7	0.0
DUBAI	86,414	-3.1	-2.2	-9.3	-2.3	1.3
TOKYO - HANEDA	85,509	-2.1	1.2	-1.6	-2.6	-5.2
CHICAGO - O'HARE	84,816	1.8	3.3	3.9	-0.1	0.4
LONDON - HEATHROW	80,889	1.0	1.4	2.1	-1.2	1.8
PARIS - CDG	76,150	5.4	5.8	8.4	4.3	3.5
SHANGHAI - PUDONG	76,148	2.9	4.9	3.4	2.6	0.6
DALLAS - FORT WORTH	75,062	8.6	4.6	7.7	11.1	10.7
GUANGZHOU	73,209	4.9	4.8	2.4	7.5	5.0
AMSTERDAM	71,707	0.9	1.6	1.3	0.0	0.9
HONG KONG	71,437	-4.2	2.6	2.7	-7.9	-13.9
SEOUL - INCHEON	71,204	4.2	4.4	6.7	4.0	1.6
FRANCFORT	70,556	1.5	2.5	3.3	1.2	-1.1
Total*	8,157,052	2.9				



Airports	Movements 2019	19/18 (%)	Q1 19/18 (%)	Q2 19/18 (%)	Q3 19/18 (%)	Q4 19/18 (%)
CHICAGO - O'HARE	925,650	2.4	3.6	2.8	1.2	2.2
ATLANTA	904,301	1.0	1.7	0.9	0.8	0.5
DALLAS - FORT WORTH	720,007	7.9	5.0	5.5	10.7	10.1
LOS ANGELES - INTL	691,257	-2.1	-1.4	-3.3	-1.8	-1.9
DENVER	631,961	6.1	3.4	5.4	8.4	7.0
BEIJING - CAPITAL	594,329	-3.2	-1.1	-5.6	-0.7	-5.3
CHARLOTTE	578,263	4.9	5.9	4.1	3.7	6.0
AMSTERDAM	515,811	-0.4	-0.1	0.2	-0.9	-0.6
FRANCFORT	513,912	0.4	3.0	1.4	0.9	-3.7
SHANGHAI - PUDONG	511,807	1.4	2.4	1.5	2.0	-0.3
PARIS - CDG	504,836	3.4	3.9	6.3	3.4	0.5
GUANGZHOU	489,979	2.6	2.8	1.3	4.2	2.3
HOUSTON - INTL	478,064	2.4	4.1	1.8	0.7	3.2
LONDON - HEATHROW	478,002	0.0	0.4	1.1	-0.8	-0.5
LAS VEGAS - MC CARRAN	467,200	2.4	0.1	3.6	1.5	4.1
Total*	81,047,445	1.0				



Airports	Cargo 2019 ('000 tons)	19/18 (%)	Q1 19/18 (%)	Q2 19/18 (%)	Q3 19/18 (%)	Q4 19/18 (%)
HONG KONG	4,803	-6.2	-5.7	-7.8	-8.2	-3.2
MEMPHIS	4,323	-3.3	1.0	-2.2	-6.9	-4.9
SHANGHAI - PUDONG	3,664	-2.7	-9.1	-7.1	-2.8	7.6
LOUISVILLE	2,790	6.4	-1.0	8.9	10.1	7.2
SEOUL - INCHEON	2,764	-6.4	-6.8	-7.2	-7.9	-3.7
ANCHORAGE	2,745	-2.2	-1.9	-2.6	-0.9	-3.2
DUBAI	2,515	-4.8	4.1	-9.9	-5.6	-7.0
DOHA	2,216	0.8	-1.3	0.3	0.4	3.6
TAIPEI	2,182	-6.0	-6.9	-8.7	-8.1	-0.7
TOKYO - NARITA	2,103	-7.0	-12.3	-11.5	-2.9	-0.8
PARIS - CDG	2,102	-2.5	0.5	-1.3	-1.3	-7.3
LOS ANGELES - INTL	2,094	-5.5	-2.7	-5.0	-8.5	-5.6
MIAMI	2,092	-1.7	-1.6	2.4	-1.2	-6.3
FRANCFORT	2,091	-3.9	-1.6	-3.5	-3.4	-6.9
SINGAPOUR	2,057	-6.3	-3.9	-7.5	-7.3	-6.3
Total*	109,303	-2.7				



* Preliminary results based on 1200 airports

Sources : FRACS Air transport data, ACI



AIR TRANSPORT TREND BULLETIN



AFRICA & MIDDLE EAST

Main airports' traffic 2019

by regions

The global growth in this region was +3.4% in 2019 (+5.3% in 2018), but with high disparities. In Africa the increase exceeded +6.5% and even more in North African countries like Egypt and Morocco. The touristic places of Sharm El Sheikh (SSH) and Marrakech (RAK) still had the strongest growth in passenger traffic, up to +24.5% and +20.4% in comparison to 2018.

The Air freight traffic transported in this region decreased in 2019 (-3.0%), mostly in Middle Eastern countries.

City code	Airport code	City/ Country	Passengers	% 19/18	Movements	% 19/18	Cargo (tons)	% 19/18
DXB	DXB	DUBAI, U. A. EMIRATES	86,422,888	-3.1	373,168	-8.6	2,536,761	-4.0
DOH	DOH	DOHA, QATAR	38,786,566	12.4	262,395	6.6	2,215,805	0.8
JED	JED	JEDDAH, SAUDI ARABIA	35,636,076	-4.7	235,036	-2.8	353,659	-3.6
RUH	RUH	RIYADH, SAUDI ARABIA	28,565,637	-3.3	208,781	-1.6	234,067	6.9
TLV	LLBG	TEL AVIV-BEN GURION, ISRAEL	24,822,370	8.2	167,947	6.7	351,509	0.8
JNB	JNB	JOHANNESBURG, SOUTH AFRICA	21,758,363	2.2	218,208	-0.2	347,076	-18.3
AUH	AUH	ABU DHABI, U. A. EMIRATES	21,160,084	-1.3	123,600	-10.0	570,840	-4.7
CAI	CAI	CAIRO, ARAB REP. OF EGYPT	18,987,224	8.2	163,118	5.7	338,129	4.5
MCT	MCT	MUSCAT, OMAN	15,989,921	3.7	117,997	-0.7	239,854	11.4
KWI	KWI	KUWAIT, KUWAIT	15,555,922	4.4	122,366	3.6	242,477	-2.8
THR	KTHR	TEHRAN, IRAN, ISLAMIC REP. OF	14,931,798	-1.6	124,402	-3.8	104,260	-0.5
SHJ	SHJ	SHARJAH, U. A. EMIRATES	13,614,053	13.0	89,258	7.3	99,163	5.2
ADD	ADD	ADDIS ABABA, ETHIOPIA	11,985,986	6.4	123,989	6.3	274,716	5.6
CPT	CPT	CAPE TOWN, SOUTH AFRICA	10,979,946	1.9	96,974	-2.9	n.a.	-
CAS	CMN	CASABLANCA-MOHAMED V., MOROCCO	10,278,668	5.6	93,896	5.5	89,868	8.8
DMM	DMM	DAMMAM, SAUDI ARABIA	10,242,341	-6.0	93,319	-1.5	n.a.	-
BAH	BAH	BAHRAIN, BAHRAIN	9,578,797	5.5	95,486	-0.6	211,953	-5.3
BEY	BEY	BEIRUT, LEBANON	9,006,672	1.9	74,169	0.6	95,191	-3.1
AMM	AMM	AMMAN, JORDAN	8,924,104	5.9	79,708	3.7	104,095	-2.0
MHD	MHD	MASHAD, IRAN, ISLAMIC REP. OF	8,861,319	-2.4	59,884	-5.0	84,028	-3.8
NBO	NBO	NAIROBI, KENYA	8,303,006	3.5	116,300	2.1	358,345	4.6
MED	MED	MADINAH, SAUDI ARABIA	8,190,338	-2.7	60,668	0.1	n.a.	-
ALG	ALG	ALGIERS, ALGERIA	7,835,774	-1.7	86,209	-3.9	39,305	-5.0
HRG	HRG	HURGHADA, ARAB REP. OF EGYPT	7,502,655	12.5	52,310	10.1	n.a.	-
LOS	LOS	LAGOS, NIGERIA	7,381,853	7.8	95,944	4.9	249,106	7.0
THR	IKA	TEHERAN IMAM KHOMEINI, IRAN, ISLAMIC REP. OF	7,055,159	-7.4	43,571	-13.5	143,513	-1.3
TUN	TUN	TUNIS, TUNISIA	6,468,864	3.1	66,052	1.7	30,218	-8.1
RAK	RAK	MARRAKECH, MOROCCO	6,359,052	20.4	49,331	18.9	295	-24.0
DUR	DUR	DURBAN, SOUTH AFRICA	6,265,055	6.5	52,161	1.6	16,202	23.9
SSH	SSH	SHARM EL SHEIKH, ARAB REP. OF EGYPT	5,895,941	24.5	42,417	19.3	n.a.	-
ABV	ABV	ABUJA, NIGERIA	5,329,593	14.2	71,816	3.5	5,003	5.2
AHB	AHB	ABHA, SAUDI ARABIA	4,484,445	2.9	40,955	16.9	n.a.	-
MRU	MRU	MAURITIUS, MAURITIUS	3,949,000	2.9	n.a.	-	n.a.	-
*KRT	KRT	KHARTOUM, SUDAN	3,423,384	-	30,510	-	26,551	-
KIH	KIH	KISH ISLAND, IRAN, ISLAMIC REP. OF	3,206,496	8.9	24,784	4.3	33,901	6.3
ACC	ACC	ACCRA, GHANA	3,019,064	16.3	46,996	20.0	49,846	-4.9
SYZ	SYZ	SHIRAZ, IRAN, ISLAMIC REP. OF	3,011,211	-6.3	29,621	-8.4	31,290	-1.1
*NJF	NJF	NAJAF, IRAQ	2,793,219	-	22,835	-	n.a.	-
GIZ	GIZ	GIZAN, SAUDI ARABIA	2,567,373	-7.7	23,221	2.3	n.a.	-
DKR	DSS	DAKAR, BLAISE DIAGNE, SENEGAL	2,491,393	4.7	28,458	3.0	36,615	3.4
DAR	DAR	DAR ES SALAAM, TANZANIA	2,472,885	2.5	69,435	-2.8	17,252	6.7
AWZ	AWZ	AHWAZ, IRAN, ISLAMIC REP. OF	2,374,417	-3.7	20,121	-5.3	18,155	-7.1
ABJ	ABJ	ABIDJAN, COTE D'IVOIRE	2,271,700	3.8	33,375	-2.9	28,153	13.1
HBE	HBE	BORG EL ARAB, EGYPT ARAB REP. OF EGYPT	2,233,394	-4.1	22,222	-3.8	n.a.	-
DJE	DJE	DJERBA, TUNISIA	2,014,589	4.6	15,258	-8.3	n.a.	-
EBB	EBB	ENTEBBE/KAMPALA, UGANDA	2,008,230	7.3	41,448	1.7	65,364	2.1
AGA	AGA	AGADIR, MOROCCO	2,003,672	4.2	17,653	1.8	552	82.8
*ORN	ORN	ORAN, ALGERIA	1,923,346	-	19,141	-	966	-
IFN	IFN	ISFAHAN, IRAN, ISLAMIC REP. OF	1,881,387	-13.6	17,447	-14.6	17,368	-13.2
RMF	RMF	MARSA ALAM, ARAB REP OF EGYPT	1,738,976	16.6	11,463	10.4	n.a.	-

* 2018 data

Sources : FRACS Air transport data, ACI





AIR TRANSPORT TREND BULLETIN



ASIA

Main airports' traffic 2019

by regions

In 2019 Asia air traffic did not escape from the global slow-down, recording a +3.6% growth of the number of passengers, far less than the +6.9% of 2018. One of the main factors was the results of Indian traffic, which was one of the most dynamic in previous years. In 2019 the increase was only +2.3% against +14.4% in 2018, mainly because of the bankruptcy of Jet Airways.

The volume of air freight decreased like in other regions, close to -3.3% in 2019.

City code	Airport code	City/ Country	Passengers	% 19/18	Movements	% 19/18	Cargo (tons)	% 19/18
BJS	PEK	BEIJING-CAPITAL, P. R. CHINA	100,013,642	-1.0	594,329	-3.2	1,955,286	-5.7
TYO	HND	TOKYO-HANEDA, JAPAN	85,509,227	-1.6	457,288	0.8	1,287,178	-6.7
SHA	PVG	SHANGHAI-PUDONG, P. R. CHINA	76,153,455	2.9	511,846	1.4	3,634,230	-3.6
CAN	CAN	GUANGZHOU-BAIYUN, P. R. CHINA	73,378,475	5.2	491,249	2.9	1,919,927	1.6
HKG	HKG	HONG KONG, HONG KONG	71,538,000	-4.2	420,000	-1.8	4,810,000	-5.7
SEL	ICN	SEOUL-INCHEON, REPUBLIC OF KOREA	71,169,722	4.3	404,104	4.3	2,864,713	-6.0
DEL	DEL	DELHI, INDIA	68,490,731	-2.0	498,865	7.5	998,635	-1.9
SIN	SIN	SINGAPORE, SINGAPORE	68,300,000	4.1	382,000	-1.0	2,010,000	-6.5
BKK	KBKK	BANGKOK-NEW SUVANNABHU, THAILAND	65,421,844	3.2	380,054	2.6	1,326,914	-11.2
KUL	KUL	KUALA LUMPUR, MALAYSIA	62,328,676	3.9	407,272	2.1	714,715	-3.6
CTU	CTU	CHENGDU-SHUANGLIU, P. R. CHINA	55,858,552	5.5	366,887	4.2	671,904	1.0
SZX	SZX	SHENZHEN-BAO'AN, P. R. CHINA	52,931,925	7.3	370,180	4.0	1,283,386	5.3
TPE	TPE	TAIPEI, TAIWAN	48,689,372	4.6	265,625	3.7	2,182,342	-6.0
KMG	KMG	KUNMING-WUJIABA, P. R. CHINA	48,075,978	2.1	357,080	-1.0	415,776	-2.9
MNL	MNL	MANILA, PHILIPPINES	47,864,589	6.3	308,422	4.4	721,707	-2.3
SIA	XIY	XI AN-XIANYANG, P. R. CHINA	47,220,547	5.7	345,748	4.6	381,870	22.1
BOM	BOM	MUMBAI, INDIA	47,055,740	-5.7	349,351	6.4	896,215	-7.1
SHA	ZSSS	SHANGHAI-HONGQIAO, P. R. CHINA	45,637,882	4.6	272,928	2.3	423,615	4.0
CKG	CKG	CHONGQING-JIANGBEI, P. R. CHINA	44,786,722	7.7	318,398	5.9	410,929	7.5
TYO	NRT	TOKYO-NARITA, JAPAN	44,288,227	4.1	265,217	3.5	2,104,061	-6.9
BKK	DMK	BANGKOK -DON MUEANG, THAILAND	41,311,790	1.4	274,104	-3.8	43,564	-21.1
HGH	HGH	HANGZHOU-XIAOSHAN, P. R. CHINA	40,108,405	4.9	290,919	2.1	690,276	7.7
*SGN	SGN	TAN SON NHAT, SOC. REP. OF VIET NAM	38,414,737	-	239,341	-	667,507	-
BLR	BLR	KEMPEGOWDA INTL AIRPORT, BANGALORE, INDIA	33,655,566	4.1	260,899	11.3	379,442	-1.0
OSA	KIX	OSAKA-KANSAI, JAPAN	31,902,462	10.2	206,865	10.6	791,906	-7.5
CJU	CJU	CHEJU, REPUBLIC OF KOREA	31,316,394	6.3	175,366	4.2	96,086	-16.0
NKG	NKG	NANJING-LUKOU, P. R. CHINA	30,581,685	7.0	234,869	6.3	374,634	2.6
CGO	CGO	ZHENGZHOU-XINZHENG, P. R. CHINA	29,129,328	6.6	216,399	3.2	522,021	1.4
XMN	XMN	XIAMEN-GAOQI, P. R. CHINA	27,413,363	3.2	192,929	-0.2	330,512	-4.3
WUH	WUH	WUHAN-TIANHE, P. R. CHINA	27,150,246	10.8	203,131	8.2	243,193	9.8
CSX	CSX	CHANGSHA, P. R. CHINA	26,911,393	6.5	196,213	5.1	175,725	13.0
*HAN	HAN	NO BAI, SOC. REP. OF VIET NAM	25,908,048	-	164,668	-	728,414	-
TAO	TAO	QINGDAO-LIUTING, P. R. CHINA	25,556,278	4.2	186,500	2.1	256,299	14.1
SEL	GMP	SEOUL-GIMPO, REPUBLIC OF KOREA	25,448,416	3.4	140,422	-0.5	124,868	-12.9
FUK	FUK	FUKUOKA, JAPAN	24,683,719	0.2	n.a.	-	264,988	0.3
SPK	CTS	SAPPORO-CHITOSE, JAPAN	24,594,904	5.5	155,696	3.4	184,404	-11.4
HAK	HAK	HAIKOU-MEILAN, P. R. CHINA	24,216,552	0.4	164,786	-0.2	175,566	4.1
URC	URC	URUMQI-DIWOPU, P. R. CHINA	23,963,167	4.1	178,234	1.1	172,801	9.6
TSN	TSN	TIANJIN-BINHAI, P. R. CHINA	23,813,318	0.9	167,869	-6.4	226,163	-12.6
MAA	MAA	CHENNAI, INDIA	22,819,719	1.5	193,356	9.0	370,920	-9.8
CCU	CCU	KOLKATA, INDIA	22,502,668	3.9	176,480	10.6	156,165	-1.1
HYD	HYD	HYDERABAD, INDIA	22,329,050	6.8	195,592	12.0	145,590	2.2
KWE	KWE	GUIYANG-LONGDONGBAO, P. R. CHINA	21,910,911	9.0	167,063	5.4	120,110	6.9
OKA	OKA	OKINAWA, RYUKYU IS., JAPAN	21,758,160	1.8	161,612	-1.2	325,443	-7.9
HRB	HRB	HARBIN-TAIPING, P. R. CHINA	20,779,745	1.7	147,795	0.9	135,923	8.7
SHE	SHE	SHENYANG-TAOXIAN, P. R. CHINA	20,544,044	8.0	145,350	5.6	192,478	14.2
SYX	SYX	SANYA-FENGHUANG, P. R. CHINA	20,163,655	0.6	124,813	1.1	99,821	4.9
DLC	DLC	DALIAN-ZHOUSHUIZI, P. R. CHINA	20,079,995	7.0	154,976	5.7	173,534	7.2
HKT	HKT	PHUKET, THAILAND	18,093,704	-0.4	115,665	-2.2	53,904	-12.0
TNA	TNA	JINAN-YAOQIANG, P. R. CHINA	17,560,507	5.7	129,994	2.5	135,263	19.0

* 2018 data

Sources : FRACS Air transport data, ACI





AIR TRANSPORT TREND BULLETIN



EUROPE

Main airports' traffic 2019

by regions

Europe also saw a significant slowdown with a +3.3% growth of passenger traffic in 2019 (+6.3% in 2018). Despite the strong performance of some eastern countries like Austria, Poland and Ukraine. In the north, UK and Germany recorded very small increases, while Sweden and Iceland even saw a decrease of air traffic.

Same decrease as in Asia for the freight market with a -3.3% evolution compared to 2018.

City code	Airport code	City/ Country	Passengers	% 19/18	Movements	% 19/18	Cargo (tons)	% 19/18
LON	LHR	LONDON-HEATHROW, ENGLAND UK	80,890,031	1.0	481,913	-0.1	1,672,910	-5.6
PAR	CDG	PARIS-DE GAULLE, FRANCE	76,150,007	5.4	504,836	3.4	2,102,268	-2.5
AMS	AMS	AMSTERDAM, NETHERLANDS	71,707,144	0.9	515,811	-0.4	1,570,388	-9.6
FRA	FRA	FRANKFURT, GERMANY	70,556,072	1.5	513,912	0.4	2,091,174	-3.9
MAD	LEMD	MADRID, BARAJAS, SPAIN	61,715,564	6.6	426,376	4.0	582,458	6.9
BCN	BCN	BARCELONA, SPAIN	52,663,623	5.0	344,558	2.7	154,041	3.7
IST	KIST	ISTANBUL - ISTANBUL, TURKEY	51,970,950	-	330,854	-	611,496	-
MOW	SVO	MOSCOW-SHEREMETYEVO, RUSSIAN FED.	49,932,752	8.9	386,370	10.5	295,356	8.7
MUC	MUC	MUNICH, GERMANY	47,941,348	3.6	417,138	0.9	350,058	-5.0
LON	LGW	LONDON-GATWICK, ENGLAND UK	46,576,473	1.1	287,202	-0.1	117,998	-1.4
ROM	FCO	ROME-DA VINCI, ITALY	43,527,905	1.2	309,777	0.7	194,518	-5.5
AYT	AYT	ANTALYA, TURKEY	35,973,450	12.6	212,544	11.0	7,734	22.7
IST	SAW	ISTANBUL - SABIHA GOKCEN, TURKEY	35,572,747	4.2	235,723	1.5	60,100	-14.6
DUB	DUB	DUBLIN, REPUBLIC OF IRELAND	32,651,251	4.6	238,998	2.5	143,128	-5.3
PAR	ORY	PARIS-ORLY, FRANCE	31,853,049	-3.8	221,405	-4.6	98,542	3.3
VIE	VIE	VIENNA, AUSTRIA	31,662,189	17.1	285,285	9.8	299,937	-3.0
ZRH	ZRH	ZURICH, SWITZERLAND	31,516,338	1.3	243,115	-0.5	354,761	-7.1
LIS	LIS	LISBON, PORTUGAL	31,172,721	7.4	221,773	1.7	154,366	14.1
CPH	CPH	COPENHAGEN, DENMARK	30,227,273	0.1	263,411	-1.0	291,287	4.5
PMI	KPMI	PALMA, MALLORCA ISLAND, SPAIN	29,719,708	2.2	217,218	-1.4	10,095	-9.8
MAN	MAN	MANCHESTER, ENGLAND UK	29,396,803	3.9	204,659	0.8	110,746	-5.5
MIL	MPX	MILAN-MALPENSA, ITALY	28,827,804	16.6	234,054	20.3	558,482	-2.5
OSL	KOSL	GARDERMOEN, NORWAY	28,592,878	0.2	248,240	-2.0	180,578	2.0
MOW	DME	MOSCOW-DOMODEDOVO, RUSSIAN FED.	28,252,337	-3.9	207,114	-5.1	126,958	-11.1
LON	STN	LONDON-STANSTED, ENGLAND UK	28,124,292	0.5	199,977	-1.4	241,233	-0.3
BRU	KBRU	BRUSSELS, BELGIUM	26,326,315	2.7	234,460	-0.4	500,542	-7.9
STO	ARN	ARLANDA, SWEDEN	25,642,623	-4.5	232,438	-4.4	80,370	-22.2
ATH	ATH	ATHENS, GREECE	25,555,457	6.0	225,628	3.9	93,968	1.5
DUS	DUS	DUESSELDORF, GERMANY	25,506,140	5.0	225,935	3.3	65,990	-11.9
BER	TXL	BERLIN-TEGEL, GERMANY	24,227,570	10.1	193,615	3.4	25,065	-22.6
MOW	VKO	MOSCOW-VNUKOVO, RUSSIAN FED.	24,001,521	11.7	157,729	-0.6	62,971	-15.4
HEL	EFHK	HELSINKI/VANTAA, FINLAND	21,857,278	4.9	196,199	1.1	229,532	13.4
AGP	AGP	MALAGA, SPAIN	19,832,945	4.4	144,920	2.5	3,153	10.2
LED	LED	ST. PETERSBURG, RUSSIAN FED.	19,581,262	8.1	168,572	2.9	34,119	-0.8
WAW	WAW	WARSAW, POLAND	18,864,476	6.2	195,632	3.6	114,091	5.3
LTN	LTN	LONDON-LUTON INTL, ENGLAND UK	18,216,207	8.6	142,394	3.6	36,562	35.8
GVA	GVA	GENEVA, SWITZERLAND	17,849,437	1.4	186,043	0.4	46,449	-33.5
PRG	PRG	PRAGUE, CZECH REPUBLIC	17,804,900	6.0	154,777	-0.5	81,770	1.1
HAM	HAM	HAMBURG, GERMANY	17,308,739	0.4	155,215	-0.8	27,377	-18.2
BUD	BUD	BUDAPEST, HUNGARY	16,158,980	8.8	122,814	6.8	95,595	-5.7
IST	ISL	ISTANBUL - ATATURK, TURKEY	16,150,788	-76.4	138,286	-70.2	843,846	-36.0
IEV	KBP	KIEV-BORISPOL, UKRAINE	15,260,281	21.1	110,660	17.8	51,842	6.4
ALC	ALC	ALICANTE, SPAIN	15,042,406	7.7	101,408	4.8	4,033	0.5
EDI	EDI	EDINBURGH, SCOTLAND UK	14,737,497	3.1	131,935	1.0	42,378	1.8
BUH	OTP	BUCHAREST-OTOPENI, ROMANIA	14,702,671	6.4	123,407	0.4	38,607	-2.3
NCE	NCE	NICE-COTE D'AZUR, FRANCE	14,485,423	4.6	177,718	1.3	12,737	-19.1
MIL	BGY	MILAN-ORIO SERIO, ITALY	13,853,176	7.1	95,377	6.5	119,065	-5.5
ANK	ESB	ANKARA-ESENBOGA, TURKEY	13,807,629	-17.8	99,244	-17.1	13,687	24.3
LPA	LPA	GRAN CANARIA, CANARY ISLANDS	13,258,528	-2.3	126,452	-3.5	21,915	2.2
OPO	OPO	PORTO, PORTUGAL	13,105,166	9.8	98,992	5.4	42,101	4.9

Sources : FRACS Air transport data, ACI





AIR TRANSPORT TREND BULLETIN



NORTH AMERICA

Main airports' traffic 2019

by regions

In North America the number of passenger grew up to +3.4% last year (+5.0% in 2018). Dallas (DFW) had one of the strongest increase (+8.6%), climbing from the 15th to 10th rank in the world's top busiest airports. Denver (DEN) also recorded a high growth (+7.0%), leaving New York (JFK) far behind.

The cargo sector was less impacted than in the other regions (-0.6%), mainly due to a solid domestic market.

City code	Airport code	City/ Country	Passengers	% 19/18	Movements	% 19/18	Cargo (tons)	% 19/18
ATL	ATL	ATLANTA, GEORGIA, USA	110,531,300	2.9	904,301	1.0	639,278	-7.9
LAX	KLAX	LOS ANGELES, CALIFORNIA-INTL, USA	88,068,013	0.6	673,841	-4.8	2,098,184	-5.4
CHI	ORD	CHICAGO, ILLINOIS-O'HARE, USA	84,372,618	1.4	919,704	1.8	1,805,282	-0.1
DAL	DFW	DALLAS/FT. WORTH, TEXAS-LOVE, USA	75,062,047	8.6	720,007	7.9	894,244	7.4
DEN	DEN	DENVER, COLORADO, USA	69,027,763	7.0	631,965	6.2	304,751	9.5
NYC	JFK	NEW YORK, NEW YORK-KENNEDY, USA	62,551,072	1.5	456,060	0.1	1,311,164	-5.2
SFO	SFO	SAN FRANCISCO, CALIFORNIA, USA	57,418,574	-0.6	455,785	-2.5	546,437	-4.4
SEA	SEA	SEATTLE/TACOMA, WASHINGTON, USA	51,829,252	4.0	450,487	2.8	453,549	4.9
LAS	KLAS	LAS VEGAS, NEVADA-MCCARRAN, USA	51,691,066	3.8	552,962	2.4	119,866	1.3
ORL	MCO	ORLANDO, FLORIDA-INTL, USA	50,670,315	6.2	357,693	2.9	251,907	-1.6
YTO	YYZ	TORONTO, ONTARIO-PEARSON, CANADA	50,499,431	2.0	453,041	-4.2	n.a.	-
CLT	CLT	CHARLOTTE, NORTH CAROLINA, USA	50,163,104	8.0	578,263	5.1	166,775	-21.0
NYC	EWR	NEW YORK, NEW YORK-NEWARK INTL, USA	46,336,452	1.0	446,320	-1.6	805,537	-2.5
PHX	KPHX	PHOENIX, ARIZONA-SKY HARBOR INTL, USA	46,287,790	3.0	438,891	1.1	356,553	0.6
MIA	MIA	MIAMI, FLORIDA, USA	45,924,466	2.0	416,340	0.2	2,307,024	-1.7
HOU	IAH	HOUSTON, TEXAS-INTERCONT, USA	44,990,399	2.7	478,064	2.4	507,557	-3.9
BOS	BOS	BOSTON, MASSACHUSETTS, USA	42,522,411	3.7	427,176	0.7	353,316	5.9
MSP	MSP	MINNEAPOLIS/ST. PAUL, MN, USA	39,555,035	4.0	406,076	-0.1	228,683	-4.4
FLL	FLL	FT. LAUDERDALE, FLORIDA, USA	36,747,622	2.2	331,447	-0.6	105,389	-2.7
DTT	DTW	DETROIT, MICHIGAN-WAYNE CO, USA	36,561,540	3.8	396,909	0.8	213,496	-7.3
PHL	PHL	PHILADELPHIA PA/WILMTON, DE, USA	33,018,702	4.2	390,321	2.8	545,545	8.3
NYC	LGA	NEW YORK, NEW YORK-LA GUARDIA, USA	31,084,894	3.3	373,356	0.4	9,515	-7.6
BWI	BWI	BALTIMORE, MARYLAND, USA	26,992,859	-0.5	262,597	-1.5	226,793	13.7
YVR	YVR	VANCOUVER, BC, CANADA	26,875,241	3.3	335,815	-0.7	303,041	-10.4
SLC	SLC	SALT LAKE CITY, UTAH, USA	26,808,014	4.9	344,625	2.2	201,268	2.4
SAN	SAN	SAN DIEGO, CALIFORNIA, USA	25,210,069	4.0	231,623	2.9	170,246	-2.4
WAS	IAD	WASHINGTON, DC-DULLES, USA	24,686,236	3.2	285,042	3.9	273,434	-9.1
WAS	DCA	WASHINGTON, DC-NATIONAL, USA	23,913,359	2.1	292,682	0.5	2,178	-6.8
TPA	TPA	TAMPA/ST. PETERSBURG, FLORIDA, USA	22,497,813	5.7	217,392	5.1	212,145	4.4
CHI	MDW	CHICAGO, ILLINOIS-MIDWAY, USA	20,758,346	-5.8	232,084	-4.6	19,469	-13.1
YMQ	YUL	MONTREAL, QUEBEC-TRUDEAU, CANADA	20,439,038	5.2	236,908	-1.4	n.a.	-
PDX	PDX	PORTLAND, OREGON, USA	19,891,365	0.0	236,472	1.1	298,256	20.6
BNA	BNA	NASHVILLE, TENNESSEE, USA	18,273,574	14.2	234,964	7.5	47,728	-0.2
YYC	YYC	CALGARY, ALBERTA, CANADA	17,879,237	3.1	231,246	-1.7	n.a.	-
AUS	AUS	AUSTIN, TEXAS, USA	17,343,729	9.6	209,726	-0.2	82,672	-0.1
DAL	KDAL	DALLAS/LOVE FIELD, TX, USA	16,754,262	3.2	231,879	0.3	n.a.	-
STL	STL	ST. LOUIS, MISSOURI, USA	15,893,829	1.7	193,925	-0.2	72,190	7.1
SJC	SJC	SAN JOSE, CALIFORNIA, USA	15,739,582	9.9	205,189	18.3	50,068	-8.3
HOU	KHOU	HOUTON, TEXAS-HOBBY, USA	14,428,909	-0.3	204,703	-0.2	11,912	4.6
MSY	MSY	NEW ORLEANS, LOUISIANA, USA	13,644,598	4.0	133,804	-1.1	60,338	3.1
OAK	OAK	OAKLAND, CALIFORNIA, USA	13,378,411	-1.6	242,757	0.4	582,974	-4.1
SAC	SMF	SACRAMENTO, CALIFORNIA, USA	13,172,840	9.3	138,481	-43.7	112,543	-2.4
MKC	MCI	KANSAS CITY, MISSOURI-INTL, USA	11,795,706	-0.5	123,395	-3.2	96,072	-0.3
SNA	SNA	ORANGE COUNTY, CALIFORNIA, USA	10,656,986	-0.1	300,114	-5.0	16,057	-9.4
SAT	SAT	SAN ANTONIO, TEXAS, USA	10,363,040	3.2	163,870	-1.0	125,908	2.0
FMY	RSW	FORT MYERS, FLORIDA-REGIONAL, USA	10,225,180	9.1	85,227	3.4	16,207	10.1
CLE	KCLE	CLEVELAND, OHIO-HOPKINS INTL, USA	10,041,142	4.1	126,999	0.4	75,605	-3.2
PIT	PIT	PITTSBURGH, PENNSYLVANIA, USA	9,779,024	1.2	142,900	-2.5	89,509	2.4
IND	IND	INDIANAPOLIS, INDIANA, USA	9,531,354	1.2	187,284	18.0	987,289	3.2
CVG	CVG	CINCINNATI, OHIO, USA	9,103,554	2.7	162,106	0.3	1,131,959	0.5

Sources : FRACS Air transport data, ACI





AIR TRANSPORT TREND BULLETIN



LATIN AMERICA & CARIBBEAN

Main airports' traffic 2019

by regions

Latin America recorded one of the strongest growth last year with +3.9% (+5.2% in 2018), despite the troubles met by the Brazilian giant, due to the bankruptcy of one of its major airlines, Avianca Brasil. Mostly thanks to dynamic domestic markets, especially in Mexico, Colombia and Argentina.

In 2018 the region was the only one to have a strong increase of air cargo traffic, whereas last year it recorded one of the biggest fall with -3.8% of freight volumes.

City code	Airport code	City/ Country	Passengers	% 19/18	Movements	% 19/18	Cargo (tons)	% 19/18
MEX	MEX	MEXICO CITY, MEXICO	50,304,011	5.5	460,245	0.2	556,142	-4.4
SAO	GRU	SAO PAULO, SP-GUARULHOS, BRAZIL	43,181,023	1.7	291,985	-0.4	501,340	-10.2
BOG	BOG	BOGOTA, COLOMBIA	34,975,009	6.9	313,301	5.0	724,269	-2.3
CUN	CUN	CANCUN, MEXICO	25,481,989	1.1	183,838	-3.3	31,476	-4.2
SCL	SCL	SANTIAGO, CHILE	24,630,742	5.6	174,233	4.0	408,387	-3.0
LIM	LIM	LIMA, PERU	23,622,146	6.8	197,858	2.7	271,326	-5.0
SAO	CGH	SAO PAULO, SP-CONGONHAS, BRAZIL	22,628,171	2.6	217,254	-2.3	57,417	19.5
BSB	BSB	BRASILIA, DF, BRAZIL	16,643,771	-7.0	143,762	-11.6	78,259	44.8
PTY	PTY	TOCUMEN, PANAMA REPUBLIC	16,582,661	2.1	149,369	0.6	107,271	-1.3
GDL	GDL	GUADALAJARA, MEXICO	14,849,655	3.4	179,689	-0.4	161,138	-2.0
RIO	GIG	RIO DE JANEIRO, RJ-INTL, BRAZIL	13,504,970	-10.0	105,142	-5.7	n.a.	-
BUE	AEP	BUENOS AIRES, - AEROPARQUE, ARGENTINA	12,311,326	-8.6	111,176	-14.6	1,434	-23.5
BUE	EZE	BUENOS AIRES, - EZEIZA, ARGENTINA	11,818,307	14.7	85,633	13.8	214,830	-5.0
BHZ	CNF	BELO HORIZONTE, MG-TANCREDO, BRAZIL	11,231,651	4.5	102,267	1.0	47,332	1.5
MTY	MTY	MONTERREY, MEXICO	11,201,352	4.0	112,188	-2.1	51,996	-7.6
SAO	VCP	SAO PAULO, SP-VIRACOPOS, BRAZIL	10,585,018	14.8	114,459	6.3	220,886	-8.5
SJU	SJU	SAN JUAN, PUERTO RICO	9,448,253	12.8	145,674	11.7	183,983	-16.1
MDE	KMDE	MEDELLIN-JOSE MARIA CORDOBA, COLOMBIA	9,205,009	14.5	75,646	9.8	115,622	-6.0
RIO	SDU	RIO DE JANEIRO, RJ-DUMONT, BRAZIL	9,078,623	-1.3	95,203	-4.9	6,981	8.5
TIJ	TIJ	TIJUANA, MEXICO	8,968,408	13.9	69,626	4.4	30,708	13.0
REC	REC	RECIFE, PE, BRAZIL	8,736,726	3.0	80,887	2.7	52,920	7.9
POA	POA	PORTO ALEGRE, RS, BRAZIL	8,243,398	-0.6	76,823	-5.1	31,806	16.3
SSA	SSA	SALVADOR, BA, BRAZIL	7,784,000	3.9	78,293	-3.4	n.a.	-
FOR	FOR	FORTALEZA, CE, BRAZIL	7,179,543	8.1	59,112	9.2	48,199	4.4
PUJ	PUJ	PUNTA CANA, DOMINICAN REP.	7,106,258	-10.7	47,226	-14.9	n.a.	-
CWB	SBCT	CURITIBA, AFONSO PENA, PR, BRAZIL	6,508,902	2.9	66,371	2.6	30,041	7.9
HAV	HAV	HAVANA, CUBA	6,176,168	-1.4	51,538	1.5	17,576	8.3
CTG	CTG	CARTAGENA, COLOMBIA	5,663,955	4.8	44,526	2.2	15,397	7.4
SJD	SJD	LOS CABOS, MEXICO	5,611,776	6.9	51,718	1.4	3,221	20.0
SJO	SJO	SAN JOSE, COSTA RICA	5,566,046	6.4	81,578	3.4	93,222	2.3
CLO	CLO	CALI, COLOMBIA	5,527,532	13.5	54,955	13.5	37,162	-8.0
UIO	UIO	QUITO, ECUADOR	5,137,558	-3.3	61,499	2.8	244,144	2.5
PVR	PVR	PUERTO VALLARTA, MEXICO	5,039,046	6.0	56,526	0.1	1,389	1.9
MBJ	MBJ	MONTEGO BAY, JAMAICA	4,749,089	5.0	41,421	1.0	7,033	-6.0
SDQ	SDQ	SANTO DOMINGO, DOMINICAN REP.	4,515,434	16.0	45,665	14.5	69,571	6.7
NAS	NAS	NASSAU, BAHAMAS	4,104,674	11.1	69,325	6.0	n.a.	-
GYE	GYE	GUAYAQUIL, ECUADOR	3,970,411	3.1	76,350	3.9	33,230	-9.5
FLN	FLN	FLORIANOPOLIS, SC, BRAZIL	3,916,661	3.7	30,836	-3.0	6,577	-6.6
CUZ	CUZ	CUZCO, PERU	3,906,169	3.8	35,774	-4.1	1,736	0.3
BEL	SBBE	BELEM, VAL-DE-CAES, PA, BRAZIL	3,674,282	3.0	38,519	-0.9	19,565	-17.0
COR	COR	CORDOBA, CD, ARGENTINA	3,528,977	3.8	31,553	-5.8	2,182	29.3
CCS	CCS	CARACAS, VENEZUELA	3,420,578	-15.6	53,783	0.0	21,319	-56.4
VIX	VIX	VITORIA, ES, BRAZIL	3,333,907	7.8	42,132	-0.5	18,785	-21.6
GYN	GYN	GOIANIA, GO, BRAZIL	3,312,921	2.6	55,861	-16.4	14,108	1.6
POS	POS	PORT OF SPAIN, TRIN. & TOB.	3,220,266	4.8	50,765	8.7	32,694	14.2
MAO	MAO	MANAUS, AM, BRAZIL	3,123,677	8.7	40,120	2.3	121,618	7.4
CGB	CGB	CUIABA, MT, BRAZIL	3,009,920	-2.1	44,591	-7.9	8,108	-4.4
*SRZ	VVI	SANTA CRUZ-VIRU VIRU, BOLIVIA	2,919,861	-	43,457	-	n.a.	-
BAQ	BAQ	BARRANQUILLA, COLOMBIA	2,811,481	8.9	49,373	-0.2	29,268	-3.4
MID	MID	MERIDA, MEXICO	2,790,649	13.2	52,341	4.5	22,444	8.7

* 2018 data

Sources : FRACS Air transport data, ACI





AIR TRANSPORT TREND BULLETIN



OCEANIA

Main airports' traffic 2019

by regions

This region recorded an important decrease in 2019 with -8.2% less passengers than in 2018. Australian air traffic remains stable with less than +1% of growth. The fall came from Indonesia, the loss is estimated at more than -15% of passenger traffic compared to 2018. Financial difficulties drove the two major airlines of the country to operate drastic cut in their capacity.

City code	Airport code	City/ Country	Passengers	% 19/18	Movements	% 19/18	Cargo (tons)	% 19/18
JKT	CGK	JAKARTA-SOEKARNO-HATTA, INDONESIA	54,515,423	-17.0	390,652	-15.6	565,635	-23.1
SYD	SYD	SYDNEY, NSW, AUSTRALIA	44,428,845	0.0	324,144	1.1	n.a.	-
MEL	MEL	MELBOURNE, VICTORIA, AUSTRALIA	37,134,291	0.6	243,070	0.1	n.a.	-
DPS	DPS	NGURAH RAI INTL INDONESIA	24,170,000	0.4	155,344	-4.9	n.a.	-
BNE	BNE	BRISBANE, QLD, AUSTRALIA	24,006,025	2.3	195,173	2.6	n.a.	-
AKL	AKL	AUCKLAND, NEW ZEALAND	21,062,436	0.7	176,580	-0.2	n.a.	-
SUB	SUB	SURABAYA, SURABAYA, JUANDA INTL, INDONESIA	16,600,000	-20.8	129,719	-17.2	88,496	-23.9
PER	PER	PERTH, WA, AUSTRALIA	12,513,516	0.3	92,381	-0.5	n.a.	-
UPG	UPG	MAKASSAR, SULTAN HASANUDDIN INTL, INDONESIA	10,750,000	-20.6	n.a.	-	n.a.	-
ADL	ADL	ADELAIDE, SA, AUSTRALIA	8,516,171	2.0	79,199	1.4	n.a.	-
KNO	KNO	KUALANAMU, MEDAN, INDONESIA	8,135,908	-22.2	64,691	-19.5	54,556	-13.0
JOG	JOG	JOGJAKARTA, ADISUCIPTO INTL, INDONESIA	7,143,435	-15.1	n.a.	-	n.a.	-
CHC	CHC	CHRISTCHURCH, NEW ZEALAND	6,900,595	-0.2	102,781	4.0	28,843	-10.2
* BTH	BTH	BATAM, HANG NADIM, INDONESIA	6,500,000	-	n.a.	-	n.a.	-
OOL	OOL	GOLD COAST, QLD, AUSTRALIA	6,486,006	0.0	40,522	-2.2	n.a.	-
WLG	WLG	WELLINGTON, NEW ZEALAND	6,381,910	-0.5	95,707	0.7	n.a.	-
JKT	HLP	JAKARTA-Halim Perdanakusuma intl INDONESIA	6,219,874	-16.5	62,047	-7.1	31,914	-7.3
BPN	BPN	BALIKPAPAN, SULTAN AJI MUHAMAD SULAIMAN, INDONESIA	5,430,849	-28.1	58,860	-16.6	44,486	-28.1
* SRG	SRG	SEMARANG, ACHMAD YANI INTL, INDONESIA	5,162,142	-	56,748	-	23,555	-
CNS	CNS	CAIRNS, QLD, AUSTRALIA	4,778,181	-3.4	45,681	-2.5	n.a.	-
* SOQ	SOQ	SORONG, INDONESIA	4,666,329	-	41,468	-	13,722	-
PLM	PLM	PALEMBANG, SULTAN MAHMUD BADARUDDIN II, INDONESIA	4,017,183	-22.3	37,254	-18.2	14,228	-29.8
* LOP	LOP	LOMBOK, INDONESIA	3,595,876	-	36,761	-	17,224	-
PNK	PNK	PONTIANAK, SUPADIO, INDONESIA	3,269,377	-22.3	29,755	-25.0	19,945	-17.8
CBR	CBR	CANBERRA, ACT, AUSTRALIA	3,238,112	-0.3	40,081	0.2	n.a.	-
PKU	PKU	PEKANBARU, SULTAN SYARIF KASIM II, INDONESIA	3,161,135	-23.6	27,453	-16.6	18,996	-19.3
PDG	PDG	PADANG, MINANGKABAU INTL, INDONESIA	3,078,484	-25.6	24,111	-19.6	14,103	-27.0
HBA	HBA	HOBART, TASMANIA, AUSTRALIA	2,781,739	3.9	20,268	4.1	n.a.	-
* SOC	SOC	SOLO, ADISUMARMO, INDONESIA	2,747,425	-	20,118	-	8,536	-
* TKG	TKG	BANDAR-LAMPUNG, RADIN INTEN II, INDONESIA	2,643,225	-	21,102	-	6,633	-
BDO	BDO	BANDUNG, HUSEIN SASTRANEGARA INTL, INDONESIA	2,480,655	-35.7	24,705	-22.5	8,977	-53.3
NAN	NAN	NADI, FIJI	2,454,769	2.0	92,755	9.3	n.a.	-
ZQN	ZQN	QUEENSTOWN, NEW ZEALAND	2,392,959	6.7	18,250	7.9	n.a.	-
* KOE	KOE	KUPANG, EL TARI, INDONESIA	2,249,986	-	30,228	-	6,953	-
MDC	MDC	MANADO, SAM RATULANGI, INDONESIA	2,229,585	-20.9	22,773	-21.9	13,600	-11.9
* DJJ	DJJ	JAYAPURA, SENTANI, INDONESIA	2,133,752	-	63,455	-	141,005	-
DRW	DRW	DARWIN, NT, AUSTRALIA	1,950,683	-1.1	24,722	-2.3	n.a.	-
PGK	PGK	PANKALPINANG, DEPATI AMIR, INDONESIA	1,640,000	-24.5	n.a.	-	n.a.	-
TSV	TSV	TOWNSVILLE, QLD, AUSTRALIA	1,610,740	0.0	24,057	-1.7	n.a.	-
* KDI	KDI	HALUOLEO, INDONESIA	1,544,643	-	12,415	-	6,248	-
DJB	DJB	JAMBI, SULTAN THAHA, INDONESIA	1,406,296	-21.3	15,653	-9.7	8,682	-12.3
LST	LST	LAUNCESTON, TASMANIA, AUSTRALIA	1,395,304	1.0	15,654	3.7	n.a.	-
* PLW	PLW	MUTIARA, INDONESIA	1,366,673	-	13,319	-	7,248	-
* MLG	MLG	ABDUL RACHMAN SALEH, INDONESIA	1,332,000	-	n.a.	-	n.a.	-
* SPN	SPN	SAIPAN, MARIANA ISLANDS	1,331,355	-	21,471	-	2,441	-
MCY	MCY	SUNSHINE COAST, QLD, AUSTRALIA	1,283,036	3.9	8,933	3.5	n.a.	-
NTL	NTL	NEWCASTLE, NSW, AUSTRALIA	1,278,058	1.9	14,299	1.3	n.a.	-
BTJ	BTJ	BANDA ACEH, SULTAN ISKANDARMUDA, INDONESIA	1,114,235	-12.5	9,279	-11.7	5,140	-15.6
DUD	DUD	DUNEDIN, NEW ZEALAND	1,071,252	1.2	23,600	12.9	n.a.	-
* BKS	BKS	FATMAWATI SOEKARNO, INDONESIA	1,065,479	-	9,719	-	4,299	-

* 2018 data

Sources : FRACS Air transport data, ACI





AIR TRANSPORT TREND BULLETIN



Airliners Orders and Deliveries 2019

Halved deliveries and orders divided by 4, a hard year for Boeing stuck in the B737 MAX crisis.

Airbus by its side realized its best ever delivery performance with a very strong last quarter. By the end of the year Airbus also registered a bunch of new orders (828 in Q4), including 300 A320 Neo ordered by IndiGo in October.

Airbus results benefited from Boeing crisis, but the global demand of commercial aircrafts decreased in 2019.

Deliveries

Deliveries	Q1 2019	Q2 2019	Q3 2019	Q4 2019	2019	2018	19/18 Variation
Airbus	161	227	182	293	863	800	63
Boeing	138	101	73	68	380	805	-425
Embraer	11	26	17	35	89	90	-1
Bombardier	3	17	6	6	33	35	-2
ATR	n.a.	n.a.	n.a.	n.a.	68	76	-8
Sukhoi	4	1	3	7	15	27	-12

Orders

Orders	Q1 2019	Q2 2019	Q3 2019	Q4 2019	2019	2018	19/18 Variation
Airbus	62	151	90	828	1131	747	384
Boeing	25	83	61	74	243	1008	-765
Embraer	4	30	-1	28	61	23	38
Bombardier	10	1	0	9	20	47	-27
ATR	n.a.	n.a.	n.a.	n.a.	65	52	13
Sukhoi	6	0	0	0	6	6	0

Deliveries by aircraft type

Deliveries	Type	Q1 2019	Q2 2019	Q3 2019	Q4 2019	2019	2018
Airbus	A222	8	13	12	15	48	20
	A320	126	168	128	220	642	626
	A330	4	12	17	20	53	49
	A350	22	31	24	35	112	93
	A380	1	3	1	3	8	12
Boeing	B737	86	27	15	-1	127	579
	B747	2	2	1	2	7	6
	B767	4	18	10	11	43	27
	B777	10	12	12	11	45	48
	B787	36	42	35	45	158	145
Embraer	EMB170	0	0	0	0	0	1
	EMB175	10	22	13	22	67	67
	EMB190	1	1	3	6	11	13
	EMB195	0	3	1	7	11	9
Bombardier	CRJ	3	11	6	6	26	20
	Qseries	1	6	0	0	7	15
ATR	ATR-42	n.a.	n.a.	n.a.	n.a.	68	76
	ATR-72	n.a.	n.a.	n.a.	n.a.		
Sukhoi	SSJ100	4	1	3	7	15	27

Orders by aircraft type

Orders	Type	Q1 2019	Q2 2019	Q3 2019	Q4 2019	2019	2018
Airbus	A222	4	15	14	85	118	135
	A320	20	131	34	611	796	541
	A330	0	2	20	82	104	27
	A350	38	3	22	50	113	40
	A380	0	0	0	0	0	4
Boeing	B737	9	27	0	31	67	760
	B747	0	0	0	0	0	18
	B767	2	8	16	0	26	40
	B777	4	18	14	2	38	59
	B787	10	30	31	41	112	131
Embraer	EMB170	0	0	0	0	0	0
	EMB175	2	20	0	22	44	68
	EMB190	0	-2	-1	-14	-17	-53
	EMB195	2	12	0	20	34	8
Bombardier	CRJ	10	1	0	9	20	23
	Qseries	0	0	0	0	0	24
ATR	ATR-42	n.a.	n.a.	n.a.	n.a.	41	20
	ATR-72	10	7	3	4	24	32
Sukhoi	SSJ100	6	0	0	0	6	6

Sources : FRACS Air transport data





AIR TRANSPORT TREND BULLETIN



Our Databases and Services

We are grateful for your reading and your interest. Don't miss our upcoming issue next July 2020 !

Feel free to **contact us** if you are interested in this data or for more details than showed up in this newsletter.

You can also directly contact our database managers **Jean-Pierre Assemat** and **Mehrdad Farzin Pour** to get a personal solution to your needs.

Find more information and previous publications on our website :

<https://fracs.aero/products-and-services/#atd>

About our databases :

Our Air Transport databases are updated on a regular basis and contain long historical data series regarding :

- Traffic data for more than 2500 airports world-wide, collected from a variety of sources since 1970.
- Traffic flows : country-pair and city-pair for over 200 countries and 2500 airports world-wide since 1970.
- Traffic, financial and fleets detailed information for 600 airlines throughout the world since 1980.

About ENAC :

ENAC is the French National School of Civil Aviation and is the largest of the major aeronautical schools or universities in Europe.

ENAC supports all the training needs of all public (civil aviation authorities, air traffic control, etc.) and private (aircraft manufacturers, engine manufacturers, equipment suppliers, airports, airlines, etc.) of these areas. in France, in Europe and in the world.

About France Aviation Civile Services :

France Aviation Civile Services is the Expertise and Consultancy Office of the Civil Aviation founded by the General Directorate of Civil Aviation (DGAC) and the French National School of Civil Aviation (ENAC).

FRACS provides tailored solutions to customer challenges, while providing strong operational expertise with an agile and flexible approach in the areas of regulation, safety oversight and air navigation.

FRACS supports their clients in meeting ICAO and EASA standards, improving operational performance and achieving strategic capabilities.

Discover FRACS products and solutions here: <https://fracs.aero/products-and-services/>

Or directly contact our Experts at : contact@fracs.aero

(if you are not interested, you can unsubscribe at any time by sending us an email)

